

# COOKIECUTTER D HELMSMAN-ET \*RC

712HO01012 840003200122821 99%RHA aAa: 231465  
RC CV TP TC TY TL TD Free of all Haplotypes Impacting Fertility

Bred and Owned by Cookiecutter Holsteins, LLC, NY

- Red Carrier!
- Backed by 10 generations of Very Good & Excellent dams, going back to SNOW-N DENISES DELLIA EX-95 2E GMD DOM
- Strong type improver at +3.11 PTAT and +2.55 UDC, with positive components and production.



**GTPI +2254 80%R**

Cookiecutter Holsteins was launched in 2004 with the purchase of MS KNKS-RNSM CHAMP HALEY-ET as a 6-month-old heifer. A flush to Goldwyn while Haley was a virgin heifer, resulting in eight full sisters, has perpetuated the family through varying branches and to date, over 5,000 animals carry the Cookiecutter prefix. The Cookiecutter "herd" is housed at Ideal Dairy Farms in Hudson Falls, N.Y. Cookiecutter is a three-way partnership between Denise Dickinson, and Kyle and Luke Getty, who are all involved at Ideal Dairy full time.



The Cookiecutter Holstein & Ideal Dairy Farms team

## HELMSMAN'S PEDIGREE

Discjockey x Avalanche x Mack

DAM: **COOKIECUTTER AVLNC HAYVA-ET VG-85**

2-03 3x 365d 30,010 4.0%F 1,212 3.3%P 987

2<sup>ND</sup> DAM: **COOKIECUTTER MAC HALMACI-ET EX-94 2E**

5-11 3x 348d 37,630 4.8%F 1,815 3.2%P 1,221

LIFETIME 1,651d 173,900 4.5%F 7,827 3.3%P 5,660

3<sup>RD</sup> DAM: **COOKIECUTTER MOM HALO-ET VG-88 DOM**

2-00 3x 365d 35,280 5.2%F 1,819 3.5%P 1,237

4<sup>TH</sup> DAM: **COOKIECUTTER GLD HOLLER-ET VG-88 DOM**

2-03 3x 365d 40,730 3.5%F 1,410 2.9%P 1,172

5<sup>TH</sup> DAM: **MS KNKS-RNSM CHAMP HALEY-ET**

EX-90 GMD DOM

3-11 3x 365d 43,690 3.7%F 1,625 2.9%P 1,274

6<sup>TH</sup> DAM: **REGANCREST-JDV HANNA-ET EX-90**

GMD DOM

4-07 3x 365d 45,110 4.3%F 1,922 3.0%P 1,364

7<sup>TH</sup> DAM: **LONG-HAVEN RUDOLPH DEE-ET EX-90**

2E GMD DOM

5-04 2x 365d 34,650 3.8%F 1,332 3.1%P 1,089

LIFETIME 2,306d 166,900 4.3%F 7,099 3.3%P 5,569

8<sup>TH</sup> DAM: **REGANCREST ELTON DISRAEL-ET VG-88**

GMD DOM

2-04 2x 365d 33,617 4.5%F 1,499 3.3%P 1,105

9<sup>TH</sup> DAM: **SNOW-N DENISES DELLIA EX-95 2E GMD DOM**

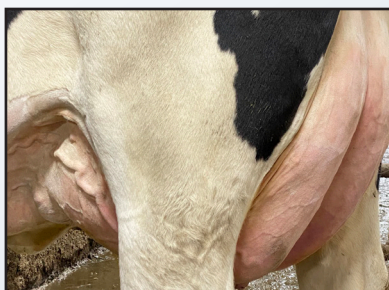
7-06 2x 365d 35,610 4.0%F 1,431 2.9%P 1,035

LIFETIME 2,558d 180,240 3.9%F 7,108 3.2%P 5,723

10<sup>TH</sup> DAM: **SNOW-N DORYS DENISE EX-90 2E GMD DOM**

5-09 2x 365d 33,350 3.8%F 1,256 2.9%P 975

LIFETIME 1,604d 114,010 3.6%F 4,153 3.0%P 3,432



COOKIECUTTER AVLNC HAYVA-ET



COOKIECUTTER MAC HALMACI-ET



COOKIECUTTER MOM HALO-ET



COOKIECUTTER GLD HOLLER-ET



MS KNKS-RNSM CHAMP HALEY-ET



LONG-HAVEN RUDOLPH DEE-ET



1 HOLSTEIN PLACE, PO BOX 808, BRATTLEBORO, VT 05302-0808 | 800.952.5200

Holstein Marketplace Sires is a division of Holstein Services, Inc.

CONFORMATION				12/22 HAUSA			
PTA Type	3.11	80%R					
Udder Composite	2.55						
Feet & Leg Composite	0.54						
Body Weight Composite	2.25						
			-3	-2	-1	1	2 3
Stature	3.91	Tall					
Strength	2.19	Strong					
Body Depth	2.26	Deep					
Dairy Form	1.71	Open					
Rump Angle	0.24	Sloped					
Rump Width	2.33	Wide					
Rear Legs-Side View	-0.95	Straight					
Rear Legs-Rear View	1.62	Straight					
Foot Angle	2.34	Steep					
Feet & Legs Score	1.20	High					
Fore Udder Attachment	3.45	Strong					
Rear Udder Height	4.22	High					
Rear Udder Width	3.18	Wide					
Udder Cleft	1.95	Strong					
Udder Depth	3.12	Shallow					
Front Teat Placement	1.03	Close					
Rear Teat Placement	1.43	Close					
Teat Length	0.25	Long					

PRODUCTION			Dtrs: 0	Herd: 0
			12/22 CDCB	
Milk	49	81%R		
Fat (lbs/%)	23	0.08%		
Protein (lbs/%)	13	0.04%		
Feed Efficiency	4			
Feed Saved	-488			
Net Merit \$	-10	75%R		
Cheese Merit \$	-3			
Beta Casein A1/A2				
Kappa Casein AE				

HEALTH & FERTILITY				12/22 CDCB	
Somatic Cell Score	2.99	Mastitis		0.4	
Productive Life	-0.1	Metritis		1.0	
Heifer Livability	1.1	Retained Placenta		-0.2	
Cow Livability	-3.8	Ketosis		1.2	
Dtr Preg Rate	-2.0	Displaced Abomasum		-0.2	
Hfr Conception Rate	-1.9	Milk Fever		0.0	
Cow Conception Rate	-2.8				
Fertility Index	-2.0				

ZOETIS WELLNESS TRAITS		12/22 Zoetis, Inc.
DWP\$		-219
WT\$		-77
Mastitis		96
Lameness		99
Metritis		97
Retained Placenta		99
Ketosis		108
Displaced Abomasum		99
Milk Fever		100
Cow Abortions		87
Twinning		96
Cow Respiratory		96
Cystic Ovary		104
CW\$		-12
Calf Livability		94
Calf Scours		106
Calf Respiratory		95

## EASY ORDERING



**COOKIECUTTER D HELMSMAN-ET**  
\*RC

712HO01012  
840003200122821



**Holstein**  
**Marketplace**  
**SIRES**

**Purchasing semen with your credit card couldn't be easier with our two methods – online or over the phone.**

### BUY ONLINE

- Visit [www.holsteinusa.com/marketplacesires](http://www.holsteinusa.com/marketplacesires)
- Click the red "buy now" button
- Fill in number of units
- Check out using our secure online page

**PHONE** in your semen order by calling Customer Service, 800.952.5200

[www.holsteinusa.com/marketplacesires](http://www.holsteinusa.com/marketplacesires)

CALVING TRAITS		12/22 CDCB
Sire Calving Ease		3.2%
Daughter Calving Ease		2.7%
Sire Stillbirth		6.7%
Daughter Stillbirth		6.5%
Gestation Length		0.3
Early First Calving		-1.3