

# PINE-TREE DANTE SHERLOCK-ET

712HO01014 840003213241731 99%RHA  
TR TP TC TY TV TL TD Free of all Haplotypes Impacting Fertility

Bred and Owned by Matthew J. Steiner, Marshallville, OH

- Elite GTPI with extreme components and solid conformation
- Beta Casein A2/A2
- Backed by an all proven sire stack, rare in newly released AI sires today!



**GTPI +2871 80%R**



Pine Tree Dairy, owned by the Steiner family

Here is an opportunity for seedstock producers looking for something different in their genetic program; or dairymen anywhere who want to boost their component production. Don't forget these genomic numbers are bolstered by an **all proven sire stack** (something rare in newly released AI sires today), and 12 generations of Very Good and Excellent dams tracing back through the 1980's.

## SHERLOCK'S PEDIGREE

Dante x Achiever x Profit

DAM: **PINE-TREE 7019 ACHI 7826-ET VG-85**  
2-01 2X 365d 31,170 5.8%F 1,807 3.5%P 1,076

2<sup>ND</sup> DAM: **PINE-TREE 9882 PROF 7019-ET VG-86**  
2-04 3X 365d 39,160 4.1%F 1,601 3.4%P 1,312

3<sup>RD</sup> DAM: **OCD SUPERSIRE 9882-ET VG-86 DOM**  
2-01 3X 365d 31,870 4.1%F 1,310 3.2%P 1,023

4<sup>TH</sup> DAM: **OCD ROBUST SHIMMER-ET EX-90 2E DOM**  
5-08 3X 365d 40,710 3.5%F 1,407 2.9%P 1,200  
LIFETIME 1,509d 146,810 3.7%F 5,485 3.0%P 4,370

5<sup>TH</sup> DAM: **AMMON-PEACHEY SHANA-ET VG-86 DOM**  
5-03 2X 335d 41,528 4.3%F 1,792 2.8%P 1,175

6<sup>TH</sup> DAM: **PINE-TREE MARTHA SHEEN-ET VG-86 DOM**  
1-11 3X 365d 31,210 4.2%F 1,305 3.1%P 968

7<sup>TH</sup> DAM: **PINE-TREE MISSY MARTHA-ET VG-86 GMD DOM**  
2-02 3X 365d 34,730 3.6%F 1,266 3.1%P 1,070

8<sup>TH</sup> DAM: **WESSWOOD-HC RUDY MISSY-ET EX-92 3E GMD DOM**  
4-11 3X 365d 40,880 4.1%F 1,665 3.2%P 1,308  
LIFETIME 1,262d 119,610 4.1%F 4,885 3.2%P 3,804

9<sup>TH</sup> DAM: **WESSWOOD ELTON MIMI EX-90 GMD DOM**  
3-05 2X 365d 35,380 3.3%F 1,160 3.0%P 1,054

10<sup>TH</sup> DAM: **WESSWOOD MANDINGO IVY VG-87**  
6-05 2X 365d 36,330 3.6%F 1,305 2.8%P 1,018  
LIFETIME 1,835d 144,060 3.4%F 4,933 2.9%P 4,139

11<sup>TH</sup> DAM: **WESSWOOD ASTRO MATT ESTER VG-87 GMD DOM**  
6-08 2X 365d 31,860 3.5%F 1,125 2.9%P 921  
LIFETIME 1,847d 140,110 3.6%F 5,029 3.0%P 4,158

12<sup>TH</sup> DAM: **WESSWOOD BELL CLAUDETTE VG-87 GMD DOM**  
9-10 2X 365d 38,810 3.6%F 1,383 2.7%P 1,066  
LIFETIME 3,634d 280,980 3.6%F 9,997 2.9%P 8,092



**PINE-TREE 7019 ACHI 7793-ET**  
FULL SISTER TO SHERLOCK'S DAM



**PINE-TREE 9882 PROF 7019-ET**



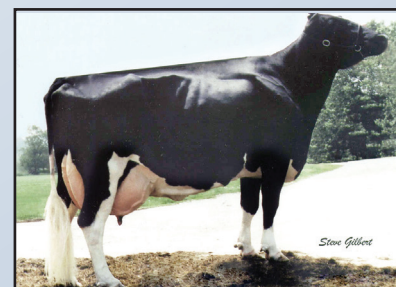
**OCD SUPERSIRE 9882-ET**



**OCD ROBUST SHIMMER-ET**



**PINE-TREE MARTHA SHEEN-ET**



**WESSWOOD-HC RUDY MISSY-ET**



1 HOLSTEIN PLACE, PO BOX 808, BRATTLEBORO, VT 05302-0808 | 800.952.5200

Holstein Marketplace Sires is a division of Holstein Services, Inc.

CONFORMATION			12/21 HAUSA						
PTA Type	1.43	80%R							
Udder Composite	1.27								
Feet & Leg Composite	0.21								
Body Weight Composite	-0.37								
			-3	-2	-1	1	2	3	
Stature	0.92	Tall							
Strength	0.49	Strong							
Body Depth	1.05	Deep							
Dairy Form	2.50	Open							
Rump Angle	-0.36	HighPins							
Rump Width	0.91	Wide							
Rear Legs-Side View	1.20	Curved							
Rear Legs-Rear View	0.58	Straight							
Foot Angle	-0.42	Low							
Feet & Legs Score	0.44	High							
Fore Udder Attachment	0.55	Strong							
Rear Udder Height	2.14	High							
Rear Udder Width	2.60	Wide							
Udder Cleft	1.43	Strong							
Udder Depth	0.14	High							
Front Teat Placement	0.82	Close							
Rear Teat Placement	1.06	Close							
Teat Length	-0.34	Short							

Here is an opportunity for seedstock producers looking for something different in their genetic program, or dairymen anywhere who want to boost their component production.

— Matthew J. Steiner

PRODUCTION			Dtrs: 0	Herd: 0
			12/21 CDCB	
Milk	1555	81%R		
Fat (lbs/%)	105	0.15%		
Protein (lbs/%)	71	0.08%		
Feed Efficiency	286			
Feed Saved	-4			
Net Merit \$	867	75%R		
Cheese Merit \$	881			
Beta Casein A2/A2				
Kappa Casein AB				

HEALTH & FERTILITY				12/21 CDCB	
Somatic Cell Score	2.99	Mastitis		-1.1	
Productive Life	2.5	Metritis		1.1	
Heifer Livability	0.6	Retained Placenta		0.3	
Cow Livability	-1.1	Ketosis		1.8	
Dtr Preg Rate	-2.8	Displaced Abomasum		0.6	
Hfr Conception Rate	0.9	Milk Fever		0.1	
Cow Conception Rate	-1.9				
Fertility Index	-1.8				

ZOETIS WELLNESS TRAITS		12/21 Zoetis, Inc.
DWP\$		831
WT\$		-22
Mastitis		97
Lameness		98
Metritis		103
Retained Placenta		103
Ketosis		108
Displaced Abomasum		103
Milk Fever		101
Cow Abortions		99
Twinning		103
Cow Respiratory		92
Cystic Ovary		108
CW\$		-37
Calf Livability		89
Calf Scours		101
Calf Respiratory		102

## EASY ORDERING



**PINE-TREE DANTE SHERLOCK-ET**  
712HO01014  
840003213241731



**Holstein  
Marketplace  
Sires**

**Purchasing semen with your credit card couldn't be easier with our two methods – online or over the phone.**

### BUY ONLINE

- Visit [www.holsteinusa.com/marketplacesires](http://www.holsteinusa.com/marketplacesires)
- Click the red "buy now" button
- Fill in number of units
- Check out using our secure online page

**PHONE** in your semen order by calling Customer Service, 800.952.5200

[www.holsteinusa.com/marketplacesires](http://www.holsteinusa.com/marketplacesires)

CALVING TRAITS		12/21 CDCB
Sire Calving Ease		2.3%
Daughter Calving Ease		1.9%
Sire Stillbirth		6.3%
Daughter Stillbirth		4.7%
Gestation Length		-2.5
Early First Calving		2.7