



712H001017 | BLUMENFELD

NAVIGATOR-ET

840003232439433 99%RHA-I aAa: 432561 A2A2 AB
TR TP TC TL TD FREE OF ALL HAPLOTYPES IMPACTING FERTILITY

4/24 CDCB

| | | |
|-----------------------|-------|-------|
| GTP1® | +2954 | 81%R |
| Net Merit \$ | +1109 | 76%R |
| PTA Type | +0.36 | 80%R |
| Udder Composite | +0.78 | |
| Feet & Leg Composite | -0.07 | |
| Milk | 553 | 82%R |
| Fat (lbs/%) | 116 | 0.33% |
| Protein (lbs/%) | 49 | 0.11% |
| Cheese Merit \$ | 1134 | |
| Sire Calving Ease | 1.8% | |
| Daughter Calving Ease | 2.0% | |
| Somatic Cell Score | 2.66 | |
| Productive Life | 5.8 | |
| Hfr Conception Rate | -0.6 | |
| Cow Conception Rate | 0.4 | |

SIRE: PEAK RAYSHEN-ET

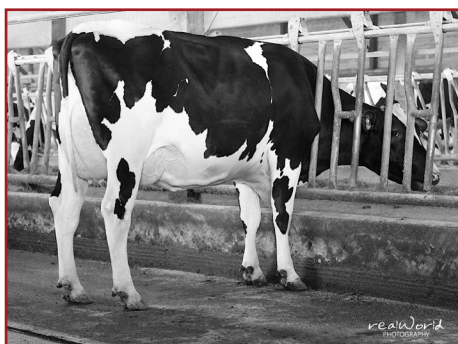
DAM: BLUMENFELD ROME 6841-ET VG-85

Sired By: DE-SU FRAZZLO ROME 14192-ET
3-01 3X 298d 27,150 5.0%F 1,367 3.4%P 935

2ND DAM: PINE-TREE 7019 ACHI 7824-ET VG-85

Sired By: ABS ACHIEVER-ET
3-03 3X 365d 38,600 4.3%F 1,653 3.3%P 1,273

5TH-13TH Dams VG or EX



DAM: BLUMENFELD ROME 6841-ET VG-85

DTRS: 0 | HERDS: 0

| | | | -3 | -2 | -1 | 1 | 2 | 3 |
|-----------------------|-------|---------|----|----|----|---|---|---|
| Stature | -0.11 | Short | | | | | | |
| Strength | -0.39 | Frail | | | | | | |
| Body Depth | -0.69 | Shallow | | | | | | |
| Dairy Form | 0.02 | Open | | | | | | |
| Rump Angle | 0.78 | Sloped | | | | | | |
| Rump Width | -0.78 | Narrow | | | | | | |
| Rear Legs-Side View | 0.24 | Curved | | | | | | |
| Rear Legs-Rear View | -0.25 | Hock In | | | | | | |
| Foot Angle | 0.17 | Steep | | | | | | |
| Feet & Legs Score | -0.05 | Low | | | | | | |
| Fore Udder Attachment | 1.30 | Strong | | | | | | |
| Rear Udder Height | 0.80 | High | | | | | | |
| Rear Udder Width | 0.65 | Wide | | | | | | |
| Udder Cleft | -0.63 | Weak | | | | | | |
| Udder Depth | 1.03 | Shallow | | | | | | |
| Front Teat Placement | 0.71 | Close | | | | | | |
| Rear Teat Placement | 0.23 | Close | | | | | | |
| Teat Length | -1.14 | Short | | | | | | |

BRED AND OWNED BY:



"NAVIGATOR exemplifies what we breed for - huge components, extreme PL, positive fertility, great udders, and moderate frames."

— Brian Waldner, Blumenfeld Holsteins LLC, Hawley, MN