



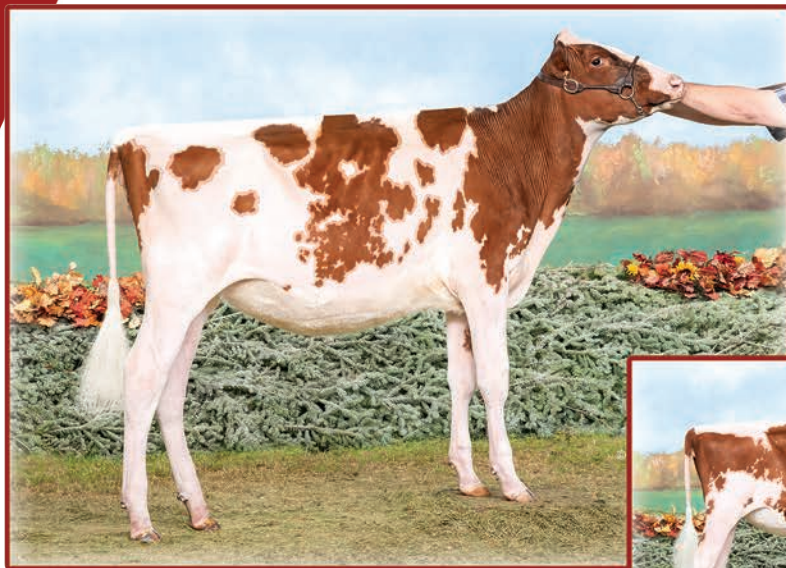
712H001018 | GOLDEN-OAKS

# TANGO-RED-ET EX-91

840003209185764 D.O.B: 11/14/2020 99%RHA-I  
aAa: 234165 A2A2 AA  
TC TY TV TL TD FREE OF ALL HAPLOTYPES IMPACTING FERTILITY



BRED AND OWNED BY: Registered Holsteins



**DAUGHTER: STRANSHOME TANGO GINGER-RED**  
Reserve All-American R&W Winter Heifer Calf - 2024  
Owned by: Jerome Stransky, MN



**DAUGHTER: RED-VIOLET LILAH-RED-ET**  
Nominated Jr. All-American R&W Fall Calf-2024  
Owned by: Claire, Luke Ziemba & Elizabeth Gunst, WI



Dam: GOLDEN-OAKS TEASE-RED-ET EX-90

**SIRE: FARNEAR ALTITUDE-RED-ET**  
**DAM: GOLDEN-OAKS TEASE-RED-ET EX-90**  
Sired By: CYCLE MCGUCCI JORDY-RED  
4-11 3X 365d 31,550 4.5%F 1,424 3.2%P 998  
Lifetime 1,416d 101,730 4.6%F 4,645 3.2%P 3,293  
**2ND DAM: MISS POTTSDALE DFI TANG-RED EX-94**  
Sired By: SCIENTIFIC B DEFIANT-ET  
5-00 3X 365d 38,670 4.0%F 1,561 3.0%P 1,143  
Lifetime 1,378d 126,370 4.3%F 5,404 3.2%P 4,031  
All-American R&W Sr. 3-Year-Old-2017  
**3RD DAM: AL-N-TINE DEBONAIR TART-ET EX-92 3E**  
Sired By: SCIENTIFIC DEBONAIR-RED-ETS  
5-01 2X 365d 30,120 4.2%F 1,262 3.4%P 1,020  
Lifetime 1,985d 138,130 4.4%F 6,137 3.4%P 4,722  
**4TH DAM: AL-N-TINE ADVENT TRISCUIT EX-91 2E**  
Sired By: KHW KITE ADVENT-RED-ET  
6-09 3X 305d 29,150 4.4%F 1,289 3.3%P 965  
1st Sr. 3-Year-Old Mid-East Fall National-2010  
5TH-8TH Dams VG or EX

04/25 CDCB

GTPI®	+2219	81%R
Net Merit \$	-576	75%R

04/25 HAUSA

PTA Type	+3.39	81%R
Udder Composite	+1.96	
Feet & Leg Composite	+1.76	

			-3	-2	-1	1	2	3
Stature	4.27	Tall						
Strength	1.93	Strong						
Body Depth	2.60	Deep						
Dairy Form	1.94	Open						
Rump Angle	-0.10	HighPins						
Rump Width	2.76	Wide						
Rear Legs-Side View	0.80	Curved						
Rear Legs-Rear View	2.80	Straight						
Foot Angle	2.75	Steep						
Feet & Legs Score	2.45	High						
Fore Udder Attachment	2.74	Strong						
Rear Udder Height	3.55	High						
Rear Udder Width	3.12	Wide						
Udder Cleft	2.17	Strong						
Udder Depth	2.38	Shallow						
Front Teat Placement	1.35	Close						
Rear Teat Placement	1.76	Close						
Teat Length	0.94	Long						

## HEALTH & FERTILITY

Somatic Cell Score	+3.10
Productive Life	-2.7
Heifer Livability	0.9
Cow Livability	-6.8
Dtr Preg Rate	-2.9
Hfr Conception Rate	-0.9
Cow Conception Rate	-4.7
Fertility Index	-3.9

## CALVING TRAITS

Sire Calving Ease	4.6%
Daughter Calving Ease	3.7%
Sire Stillbirth	7.3%
Daughter Stillbirth	6.1%
Gestation Length	3.4
Early First Calving	-7.9

## PRODUCTION Dtrs: 0 | Herds: 0

Milk	-1113	82%R
Fat (lbs/%)	-12	0.13%
Protein (lbs/%)	-25	0.05%
Feed Efficiency	-118	
Feed Saved	-424	
Cheese Merit \$	-566	

"TANGO is true to our breeding program with his breed-leading type numbers, combined with his style and physical makeup."

— Lucas Moser, Golden Oaks Farm, Wauconda, IL