

# GOLDEN-OAKS TANGO-RED-ET

712HO101018 840003209185764 99%RHA aAa: 234165  
TC TY TV TL TD Free of all Haplotypes Impacting Fertility

Bred and Owned by Golden Oaks Farm, Wauconda, IL

- Breed Leading Genomic Type at +4.25 PTAT, +3.08 UDC (+5.15 RUH, +4.41 RUW, +4.12 FUA), +.16 % Fat +.05%P
- A Red Altitude grandson of one of the most famous red cows in the world, Tang, who's maternal line includes Tobi EX-96 3E and Tina EX-95 2E.



**GTPI +2253 81%R**



Golden-Oaks Farm Wauconda, IL

Golden Oaks Farm strives to make superior Holstein genetics, and we feel that Tango checks a lot of the boxes. He is true to our breeding program with his breed leading type numbers, combined with his style and physical makeup. He is also backed by VG and EX dams including his All-American grand dam Defiant Tang EX-94, Tobi EX-96, and Inspiration Tina EX-95. We feel Tango can add a lot to the type side of a herd and has great potential to make future show heifers and cows.

## TANGO'S PEDIGREE

Altitude x Jordy x Defiant

DAM: **GOLDEN-OAKS TEASE-RED-ET VG-86**

2-03 3X 365 27,080 4.5%F 1,206 3.2%P 869

DAM'S FULL SISTER: **GOLDEN-OAKS TRINITY-RED-ET VG-88**

1-11 2x 365d 29,600 3.7%F 1091 3.2%P 936

DAM'S MATERNAL SISTER: **GOLDEN-OAKS TEMPTRESS-RED-ET**

1ST SR 2 & HM GRAND CHAMP 2022 MIDWEST SPRING NATIONAL R&W SHOW  
1ST SR 2 & RES INT. CHAMP. 2022 MIDWEST SPRING NATIONAL SHOW

2<sup>ND</sup> DAM: **MISS POTSDALE DFI TANG-RED EX-94**

5-00 3x 365d 38,670 4.0%F 1,561 3.0%P 1,143

LIFETIME 1,378 126,370 4.3 5404 3.2 4031

ALL-AMERICAN R&W SR 3 YR OLD 2017

RES ALL-AMERICAN R&W SR 2 YR OLD 2016

3<sup>TH</sup> DAM: **AL-N-TINE DEBONAIR TART-ET EX-92 3E**

5-01 2x 365d 30,120 4.2%F 1,262 3.4%P 1,020

LIFETIME 1985d 138,130 4.4%F 6,137 3.4%P 4,722

4<sup>TH</sup> DAM: **AL-N-TINE ADVENT TRISCUIT EX-91 2E**

6-09 3x 305d 29,150 4.4%F 1,289 3.3%P 965

1st SR 3YR OLD MID EAST FALL NATIONAL 2010

5<sup>TH</sup> DAM: **HILLMONT EMERSON TRISTA-ET EX-93 3E**

8-03 2x 365d 36,070 4.9%F 1,785 3.3%P 1,185

LIFETIME: 1,991d 167,350 5.2%F 8,643 3.4%P 5,630

6<sup>TH</sup> DAM: **NEW-VISION RDH TROPICANA-ET VG-87**

4-03 2x 360d 32,580 3.4%F 1,121 3.1%P 1007

LIFETIME: 3,231d 240,820 4.0%F 9,730 3.2%P 7,773

7<sup>TH</sup> DAM: **ERNEST-ANTHONY SD TOBI-ET EX-96 3E DOM**

6-00 2x 365d 44,090 5.0%F 2,191 3.2%P 1,423

LIFETIME: 1,701d 151,933 5.5%F 8,372 3.4%P 5,150

H.M. ALL-AMERICAN 125,000 LB COW 2004

8<sup>TH</sup> DAM: **C ALANVALE INSPIRATION TINA EX-95 2E GMD DOM**

6-00 2X 365d 36,010 5.1%F 1,829 3.3%P 1,184

LIFETIME: 1,503 136,011 4.5%F 6,122 3.3%P 4,555

RESERVE ALL-AMERICAN AGED COW 1995 & 1996



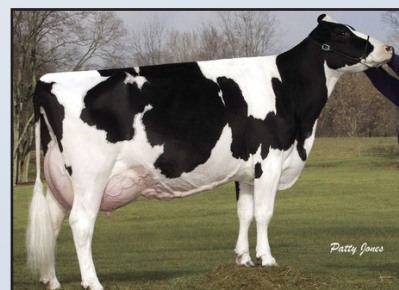
**GOLDEN-OAKS TEMPTRESS-RED-ET**  
(DAM'S FULL SISTER)



**GOLDEN-OAKS TRINITY-RED-ET**  
(DAM'S MATERNAL SISTER)



**MISS POTSDALE DFI TANG-RED**



**ERNEST ANTHONY SD TOBI**



**C ALANVALE INSPIRATION TINA**



1 HOLSTEIN PLACE, PO BOX 808, BRATTLEBORO, VT 05302-0808 | 800.952.5200

Holstein Marketplace Sires is a division of Holstein Services, Inc.

CONFORMATION		8/22 HAUSA				
PTA Type	4.25	80%R				
Udder Composite	3.08					
Feet & Leg Composite	2.10					
Body Weight Composite	2.26					
			-3	-2	-1	1 2 3
Stature	5.00	Tall				
Strength	2.32	Strong				
Body Depth	2.84	Deep				
Dairy Form	2.70	Open				
Rump Angle	-0.13	HighPins				
Rump Width	2.84	Wide				
Rear Legs-Side View	0.71	Curved				
Rear Legs-Rear View	3.11	Straight				
Foot Angle	3.10	Steep				
Feet & Legs Score	2.97	High				
Fore Udder Attachment	4.12	Strong				
Rear Udder Height	5.15	High				
Rear Udder Width	4.41	Wide				
Udder Cleft	2.61	Strong				
Udder Depth	3.52	Shallow				
Front Teat Placement	1.86	Close				
Rear Teat Placement	2.11	Close				
Teat Length	0.91	Long				

*Tango is true to our breeding program with his breed leading type numbers, combined with his style and physical makeup. We feel Tango can add a lot to the type side of a herd and has great potential to make future show heifers and cows.*

— Lucas Moser

PRODUCTION		Dtrs: 0   Herds: 0 8/22 CDCB
Milk	-470	82%R
Fat (lbs/%)	27	0.16%
Protein (lbs/%)	0	0.05%
Feed Efficiency	0	
Feed Saved	-376	
Net Merit \$	-98	74%R
Cheese Merit \$	-90	
Beta Casein		
Kappa Casein		

HEALTH & FERTILITY		8/22 CDCB	
Somatic Cell Score	2.99	Mastitis	0.0
Productive Life	-1.3	Metritis	-0.7
Heifer Livability	1.0	Retained Placenta	-0.3
Cow Livability	-6.0	Ketosis	-0.7
Dtr Preg Rate	-2.2	Displaced Abomasum	-1.3
Hfr Conception Rate	-0.2	Milk Fever	-0.3
Cow Conception Rate	-3.6		
Fertility Index	-2.5		

CALVING TRAITS		8/22 CDCB
Sire Calving Ease		4.0%
Daughter Calving Ease		3.6%
Sire Stillbirth		7.0%
Daughter Stillbirth		6.1%
Gestation Length		2.4
Early First Calving		-5.4

## EASY ORDERING



### GOLDEN-OAKS TANGO-RED-ET

712HO01018  
840003209185764



**Holstein**  
**Marketplace**  
**SIRES**

**PHONE** in your semen order by calling Customer Service, 800.952.5200

**Purchasing semen with your credit card couldn't be easier with our two methods – online or over the phone.**

#### BUY ONLINE

- Visit [www.holsteinusa.com/marketplacesires](http://www.holsteinusa.com/marketplacesires)
- Click the red "buy now" button
- Fill in number of units
- Check out using our secure online page

[www.holsteinusa.com/marketplacesires](http://www.holsteinusa.com/marketplacesires)