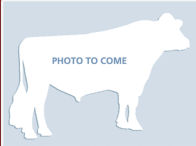


712H001022 | ESKDALE

ZION-P8400032310003II 99%RHA aAa:261435 A2A2 AA
TR PC TC TL TD FREE OF ALL HAPLOTYPES IMPACTING FERTILITY

BRED AND OWNED BY:

EskDale Dairy
"Rivers of milk in the desert"

DAM: MS AIJA MIRAND MYLAND-ET VG-86

2nd Dam: AIJA KING-DOC WICHITA-ET
VG-88 CAN

SIRE: AOT HOOSICK-ET

DAM: MS AIJA MIRAND MYLAND-ET VG-86

Sired By: COOMBOONA ZIPIT MIRAND-IMP-ET

2-01 2x 305d 24,440 4.0%F 968 3.2%P 776

2ND DAM: AIJA KING-DOC WICHITA-ET VG-88 CAN

Sired By: WOODCREST KING DOC

3-08 2x 365d 36,532 4.1%F 1,488 3.3%P 1,221 CAN

3RD DAM: WESTCOAST COMAND WISCONSIN-ET VG-86 CAN

Sired By: LARCREST COMMANDER-ET

2-00 2x 300d 24,996 4.3%F 1,085 3.4%P 848 CAN

4TH DAM: VIEW-HOME DRMAN WSCONSIN-ET VG-88 CAN

Sired By: VAL-BISSON DOORMAN-ET

2-02 2x 365d 27,070 4.3%F 1,151 3.6%P 963 CAN

6TH-13TH Dams VG & EX

04/23 CDCB

GTP1®	+2650	78%R
Net Merit \$	+453	73%R

04/23 HAUSA

PTA Type	+3.34	78%R
Udder Composite	+2.53	
Feet & Leg Composite	+0.92	

			-3	-2	-1	1	2	3
Stature	3.44	Tall						
Strength	1.45	Strong						
Body Depth	2.45	Deep						
Dairy Form	3.54	Open						
Rump Angle	-0.10	High Pins						
Rump Width	2.07	Wide						
Rear Legs-Side View	1.14	Curved						
Rear Legs-Rear View	1.01	Straight						
Foot Angle	1.78	Steep						
Feet & Legs Score	1.76	High						
Fore Udder Attachment	3.37	Strong						
Rear Udder Height	3.91	High						
Rear Udder Width	3.90	Wide						
Udder Cleft	1.66	Strong						
Udder Depth	2.31	Shallow						
Front Teat Placement	1.50	Close						
Rear Teat Placement	1.54	Close						
Teat Length	-0.15	Short						

HEALTH & FERTILITY

Somatic Cell Score	2.92
Productive Life	2.5
Heifer Livability	0.8
Cow Livability	-2.3
Dtr Preg Rate	-0.2
Hfr Conception Rate	1.0
Cow Conception Rate	0.5
Fertility Index	0.2

CALVING TRAITS

Sire Calving Ease	2.2%
Daughter Calving Ease	2.5%
Sire Stillbirth	6.3%
Daughter Stillbirth	6.9%
Gestation Length	-1.3
Early First Calving	1.6

PRODUCTION Dtrs: 0 | Herds: 0

Milk	868	79%R
Fat (lbs/%)	47	0.05%
Protein (lbs/%)	36	0.03%
Feed Efficiency	123	
Feed Saved	-121	
Cheese Merit \$	460	

"ZION-P combines pedigree, show type and balance of production and conformation, with sound health traits, and the bonus of being polled."

— John Conrad, EskDale Dairy, Eskdale, UT