



712H001024 | DEWGOOD

HIGH CALIBER-ET

840003251632075 99%RHA-I aAa: 213456 AIAI BB
TC TY TL TD FREE OF ALL HAPLOTYPES IMPACTING FERTILITY



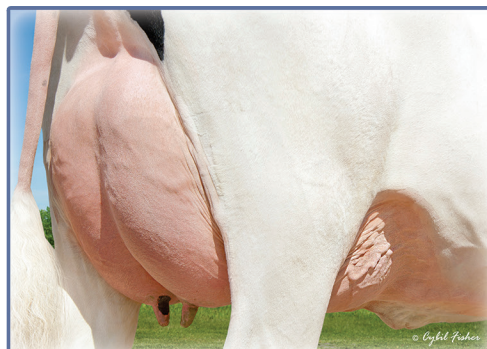
BRED AND OWNED BY: **Dewgood Holsteins**



3RD DAM: SPEEK-NJ T JOYFUL-ET VG-85



DAM: DEWGOOD 720-816 CASHIER-ET GP-82



3RD DAM: SPEEK-NJ T JOYFUL-ET VG-85

SIRE: LADYS-MANOR OVERDO-ET

DAM: DEWGOOD 720-816 CASHIER-ET GP-82

Sired By: PEAK ALTAZAZZLE-ET

1-11 2X 305d 26,870 4.1%F 1,096 3.3%P 899

2ND DAM: DEWGOOD 720 J CRINGLE-ET

Sired By: ABS CRIMSON-ET

3RD DAM: SPEEK-NJ T JOYFUL-ET VG-85

Sired By: BACON-HILL PETY MODESTY-ET

3-09 2X 365d 33,800 4.4%F 1,493 3.5%P 1,169

4TH DAM: MS JERSEY TUFF 31259-ET VG-85

Sired By: CO-OP DAY TUFFENUFF-ET

1-11 2X 305d 23,380 4.1%F 948 2.9%P 685

5TH-8TH Dams VG or EX

12/23 CDCB

GTPI®	+3192	78%R
Net Merit \$	+1112	73%R

12/23 HAUSA

PTA Type	+1.78	78%R
Udder Composite	+2.17	
Feet & Leg Composite	+1.06	

			-3	-2	-1	1	2	3
Stature	0.39	Tall						
Strength	0.33	Strong						
Body Depth	0.16	Deep						
Dairy Form	0.68	Open						
Rump Angle	0.60	Sloped						
Rump Width	0.42	Wide						
Rear Legs-Side View	-0.68	Straight						
Rear Legs-Rear View	0.92	Straight						
Foot Angle	1.41	Steep						
Feet & Legs Score	1.10	High						
Fore Udder Attachment	2.86	Strong						
Rear Udder Height	2.27	High						
Rear Udder Width	2.40	Wide						
Udder Cleft	0.67	Strong						
Udder Depth	1.88	Shallow						
Front Teat Placement	1.42	Close						
Rear Teat Placement	1.20	Close						
Teat Length	0.26	Long						

HEALTH & FERTILITY

Somatic Cell Score	2.57
Productive Life	6.2
Heifer Livability	0.8
Cow Livability	2.0
Dtr Preg Rate	-0.1
Hfr Conception Rate	0.9
Cow Conception Rate	0.5
Fertility Index	0.2

CALVING TRAITS

Sire Calving Ease	1.3%
Daughter Calving Ease	1.0%
Sire Stillbirth	5.2%
Daughter Stillbirth	3.8%
Gestation Length	-0.2
Early First Calving	0.9

PRODUCTION Dtrs: 0 | Herds: 0

Milk	1061	79%R
Fat (lbs/%)	118	0.27%
Protein (lbs/%)	62	0.1%
Feed Efficiency	276	
Feed Saved	-134	
Cheese Merit \$	1137	

"HIGH CALIBER offers moderate framed cows with great udders, high components, low somatic cell count and GREAT calving ease."

— Dean Good, Dewgood Holsteins, Oconto, WI