



712H001024 | DEWGOOD

HIGH CALIBER-ET VG-85

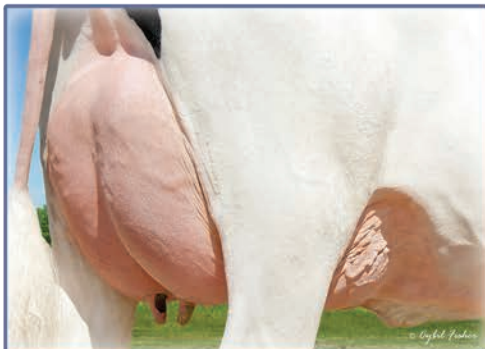
840003251632075 D.O.B: 08/27/2022 99%RHA-1
aAa: 213456 AIAI BB
TC TY TL TD FREE OF ALL HAPLOTYPES IMPACTING FERTILITY



3RD DAM: SPEEK-NJ T JOYFUL-ET VG-85 DOM



DAM: DEWGOOD 720-816 CASHIER-ET VG-86



3RD DAM: SPEEK-NJ T JOYFUL-ET VG-85 DOM

SIRE: LADYS-MANOR OVERDO-ET

DAM: DEWGOOD 720-816 CASHIER-ET VG-86

Sired By: PEAK ALTAZAZZLE-ET

3-02 2X 305d 35,000 4.2%F 1,480 3.4%P 1,180

2ND DAM: DEWGOOD 720 J CRINGLE-ET

Sired By: ABS CRIMSON-ET

3RD DAM: SPEEK-NJ T JOYFUL-ET VG-85 DOM

Sired By: BACON-HILL PETY MODESTY-ET

3-09 2X 365d 33,800 4.4%F 1,493 3.5%P 1,169

4TH DAM: MS JERSEY TUFF 31259-ET VG-85

Sired By: CO-OP DAY TUFFENUFF-ET

1-11 2X 305d 23,380 4.1%F 948 2.9%P 685

5TH-14TH Dams VG or EX



BRED AND OWNED BY: **Dewgood Holsteins**

04/25 CDCB

GTPI® +3145 80%R

Net Merit \$ +656 74%R

04/25 HAUSA

PTA Type +0.87 80%R

Udder Composite +1.28

Feet & Leg Composite +0.38

			-3	-2	-1	1	2	3
Stature	-0.15	Short						
Strength	-0.16	Frail						
Body Depth	-0.15	Shallow						
Dairy Form	0.35	Open						
Rump Angle	0.50	Sloped						
Rump Width	0.31	Wide						
Rear Legs-Side View	-0.66	Straight						
Rear Legs-Rear View	0.31	Straight						
Foot Angle	0.78	Steep						
Feet & Legs Score	0.31	High						
Fore Udder Attachment	1.86	Strong						
Rear Udder Height	0.96	High						
Rear Udder Width	1.22	Wide						
Udder Cleft	-0.01	Weak						
Udder Depth	1.17	Shallow						
Front Teat Placement	1.13	Close						
Rear Teat Placement	0.85	Close						
Teat Length	-0.03	Short						

HEALTH & FERTILITY

Somatic Cell Score +2.62

Productive Life +3.9

Heifer Livability 0.0

Cow Livability 1.9

Dtr Preg Rate +0.1

Hfr Conception Rate +0.6

Cow Conception Rate +0.1

Fertility Index +0.1

CALVING TRAITS

Sire Calving Ease 1.3%

Daughter Calving Ease 0.9%

Sire Stillbirth 5.1%

Daughter Stillbirth 3.1%

Gestation Length 0.3

Early First Calving -0.5

PRODUCTION Dtrs: 0 | Herds: 0

Milk 144 81%R

Fat (lbs/%) 66 0.23%

Protein (lbs/%) 27 0.08%

Feed Efficiency 161

Feed Saved -67

Cheese Merit \$ 696

"HIGH CALIBER offers moderate framed cows with great udders, high components, low somatic cell count and GREAT calving ease."

— Dean Good, Dewgood Holsteins, Oconto, WI