



712H001031 | ADAWAY WG

BERNARD-ET GP-83

840003267672734 D.O.B: 06/09/2023 99%RHA-I
aAa: 435261 A2A2
TR TP TE TC TL TD FREE OF ALL HAPLOTYPES IMPACTING FERTILITY



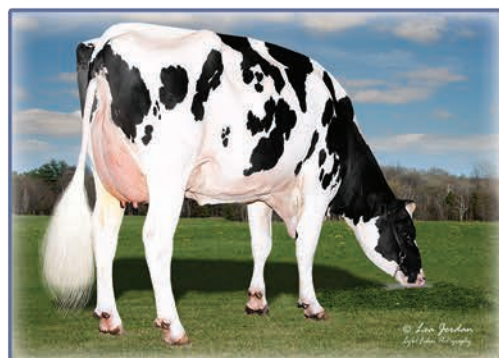
BRED AND OWNED BY:



2ND DAM: ADAWAY TRY ME 2541-ET VG-85



Full sister to Dam: Adaway Parsly 3060 VG-85



DAM: ADAWAY PARSLY 3054-ET GP-82

SIRE: WILRA S-S-I GD WAR GEAR-ET

DAM: ADAWAY PARSLY 3054-ET GP-82

Sired By: SIEMERS TWN PARSLY 32480-ET

2ND DAM: ADAWAY TRY ME 2541-ET VG-85

Sired By: MELARRY RESOLVE TRY ME-ET

3-07 3X 365d 41,690 3.4%F 1,417 3.2%P 1,345

3RD DAM: ADAWAY BATTLE 2023-ET GP-82

Sired By: MR DRACO BATTLE 67469-ET

3-01 3X 365d 25,640 4.8%F 1,243 3.5%P 899

4TH DAM: ADAWAY DELTA 1568-ET VG-85

Sired By: MR MOGUL DELTA 1427-ET

4-03 3X 340d 24,540 4.8%F 1,185 3.7%P 901

Lifetime 1,564d 109,360 5.0%F 5,414 3.6%P 3,932

5TH-12TH Dams VG or EX

04/25 CDCB

GTPI® +3335 78%R

Net Merit \$ +758 72%R

04/25 HAUSA

PTA Type +1.41 79%R

Udder Composite +1.87

Feet & Leg Composite +0.57

			-3	-2	-1	1	2	3
Stature	0.21	Tall						
Strength	-0.10	Frail						
Body Depth	-0.28	Shallow						
Dairy Form	0.27	Open						
Rump Angle	-0.89	High Pins						
Rump Width	0.72	Wide						
Rear Legs-Side View	-0.16	Straight						
Rear Legs-Rear View	0.52	Straight						
Foot Angle	0.95	Steep						
Feet & Legs Score	0.56	High						
Fore Udder Attachment	1.89	Strong						
Rear Udder Height	2.48	High						
Rear Udder Width	2.14	Wide						
Udder Cleft	0.69	Strong						
Udder Depth	1.36	Shallow						
Front Teat Placement	1.20	Close						
Rear Teat Placement	1.21	Close						
Teat Length	-0.87	Short						

HEALTH & FERTILITY

Somatic Cell Score +2.85

Productive Life +3.1

Heifer Livability 1.0

Cow Livability 0.2

Dtr Preg Rate -0.5

Hfr Conception Rate +1.0

Cow Conception Rate +0.7

Fertility Index +0.4

CALVING TRAITS

Sire Calving Ease 2.6%

Daughter Calving Ease 3.5%

Sire Stillbirth 7.8%

Daughter Stillbirth 6.4%

Gestation Length 1.6

Early First Calving 2.3

PRODUCTION Dtrs: 0 | Herds: 0

Milk 578 79%R

Fat (lbs/%) 94 0.26%

Protein (lbs/%) 47 0.10%

Feed Efficiency 251

Feed Saved -39

Cheese Merit \$ 802

"Count on BERNARD to produce the modern kind that will perform efficiently in all settings."

— Joe Adams, Adaway Dairy, Waucoma, IA