



712H001005 | OUR-FAVORITE  
**CHARISMA**-ET EX-91

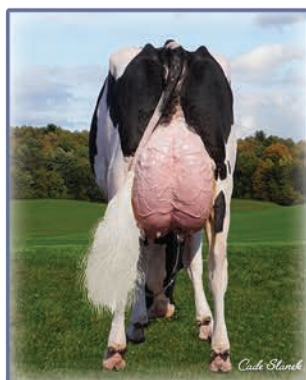
840003146864329 D.O.B: 12/02/2017 99%RHA-I  
 aAa: 234165 A2A2 BB  
 TR TP TC TY TV TL TD FREE OF ALL HAPLOTYPES IMPACTING FERTILITY



BRED AND OWNED BY:



**DAUGHTER: MS ESKDALE CHARISMA LOLITA VG-88**  
 Bred & Owned by: Lola Rae Syndicate



Dam: OUR-FAVORITE  
 COMPELLING-ET VG-88

**SIRE: WOODCREST KING DOC EX-90**  
**DAM: OUR-FAVORITE COMPELLING-ET VG-88**  
*Sired By: COOKIECUTTER HANG-TIME-ET*  
 1-11 2X 365d 27,580 5.0%F 1,389 3.7%P 1,019  
**2ND DAM: OUR-FAVORITE UNLIMITED EX-94 3E**  
*Sired By: MAPLE-DOWNS-I G W ATWOOD-ET*  
 8-01 2X 365d 34,020 4.5%F 1,539 3.5%P 1,190  
 Lifetime 2,206d 181,200 4.7%F 8,431 3.6%P 6,537  
**3RD DAM: OUR-FAVORITE OBVIOUS-ET EX-93 2E**  
*Sired By: PICSTON SHOTTLE-ET*  
 6-05 2X 365d 38,110 4.2%F 1,608 3.2%P 1,208  
 Lifetime 1,952d 178,630 4.3%F 7,684 3.4%P 6,107  
 4TH-10TH Dams VG or EX

04/25 CDCB		
GTP1®	+2585	93%R
Net Merit \$	-160	85%R

04/25 HAUSA		Dtrs: 113   Herds: 63	
PTA Type	+2.95	94%R	
Udder Composite	+1.64		
Feet & Leg Composite	+1.71		

			-3	-2	-1	1	2	3
Stature	2.81	Tall						
Strength	1.50	Strong						
Body Depth	2.47	Deep						
Dairy Form	3.42	Open						
Rump Angle	-2.48	High Pins						
Rump Width	2.03	Wide						
Rear Legs-Side View	1.45	Curved						
Rear Legs-Rear View	1.79	Straight						
Foot Angle	2.65	Steep						
Feet & Legs Score	2.30	High						
Fore Udder Attachment	2.09	Strong						
Rear Udder Height	2.65	High						
Rear Udder Width	3.28	Wide						
Udder Cleft	1.53	Strong						
Udder Depth	1.00	Shallow						
Front Teat Placement	1.23	Close						
Rear Teat Placement	1.63	Close						
Teat Length	-0.14	Short						

HEALTH & FERTILITY		CALVING TRAITS		PRODUCTION Dtrs: 163   Herds: 77	
Somatic Cell Score	+3.30	Sire Calving Ease	3.2%	Milk	128 95%R
Productive Life	-1.5	Daughter Calving Ease	2.4%	Fat (lbs/%)	6 0.00%
Heifer Livability	0.1	Sire Stillbirth	7.0%	Protein (lbs/%)	6 0.01%
Cow Livability	-2.4	Daughter Stillbirth	6.9%	Feed Efficiency	-14
Dtr Preg Rate	-1.8	Gestation Length	2.1	Feed Saved	-268
Hfr Conception Rate	+0.3	Early First Calving	0.2	Cheese Merit \$	-163
Cow Conception Rate	-1.7				
Fertility Index	-1.4				

*"CHARISMA is an all-around bull with high type that should fit into a lot of breeding programs."*  
 — Todd Stanek, Our-Favorite Holsteins, Fall Creek, WI